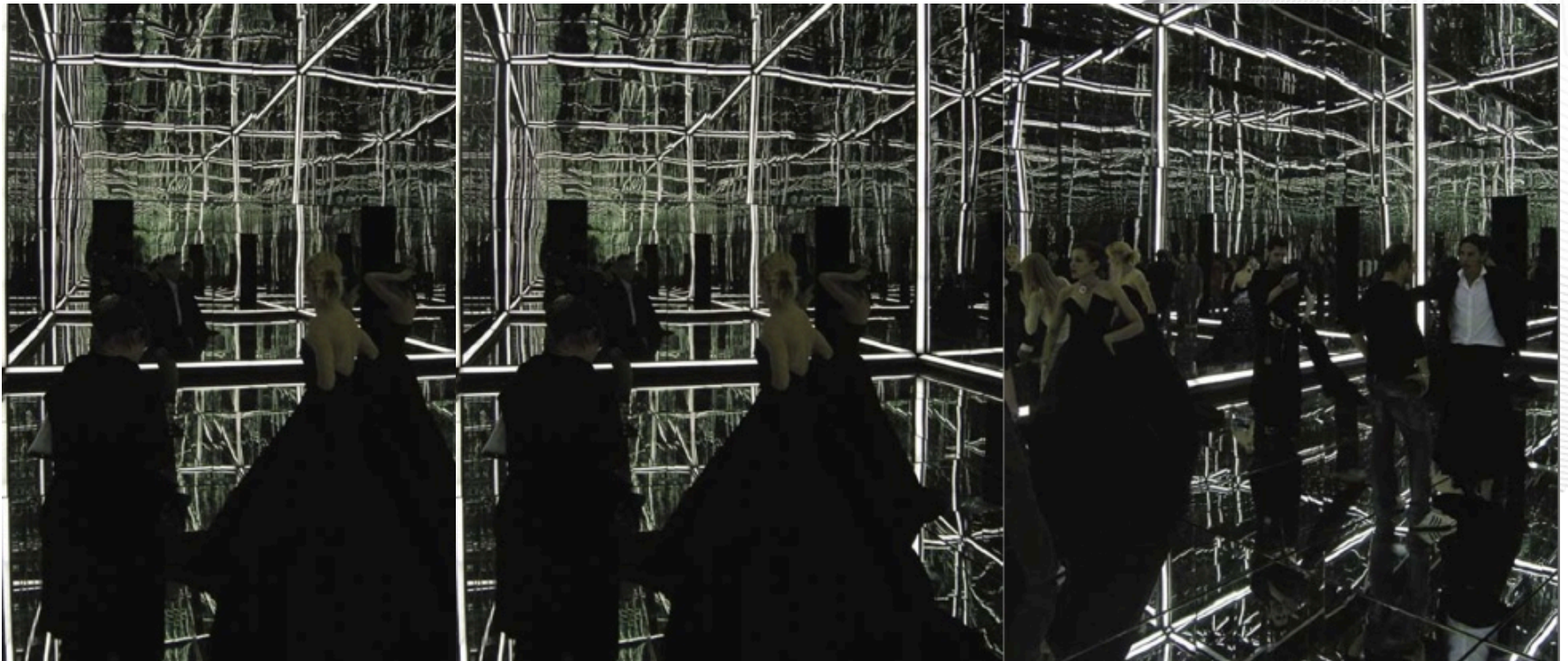


Light+Art presents
MEMBRANE

Numen Light Objects

Numen light objects arose out of a practical research for a project for the St Etienne Biennale. All objects are based on structures made out of two-way mirrors and light inserted into a grid which became a format principle. After the Biennale the artists were commissioned for the set design of Dantes Inferno directed by Tomaž Pandur.

Subsequently the project went into the development of lighting units. In the version of today there is a series of objects that derived from an investigative and analytical as well as rational approach to design.



MEMBRANE

MEMBRANE is a large-scale illuminated glass cube offering an outside view into the infinite universe within.

This walkable room structure hosts a light object made out of mutually facing spy-glass mirrors and foil mirrors forming a hexahedron attached to an air tank and a compressor. Inner edges of the cube are traced by luminescent tubes creating an illusion of a limitless light grid locked in the vertigo of its own multiplication.

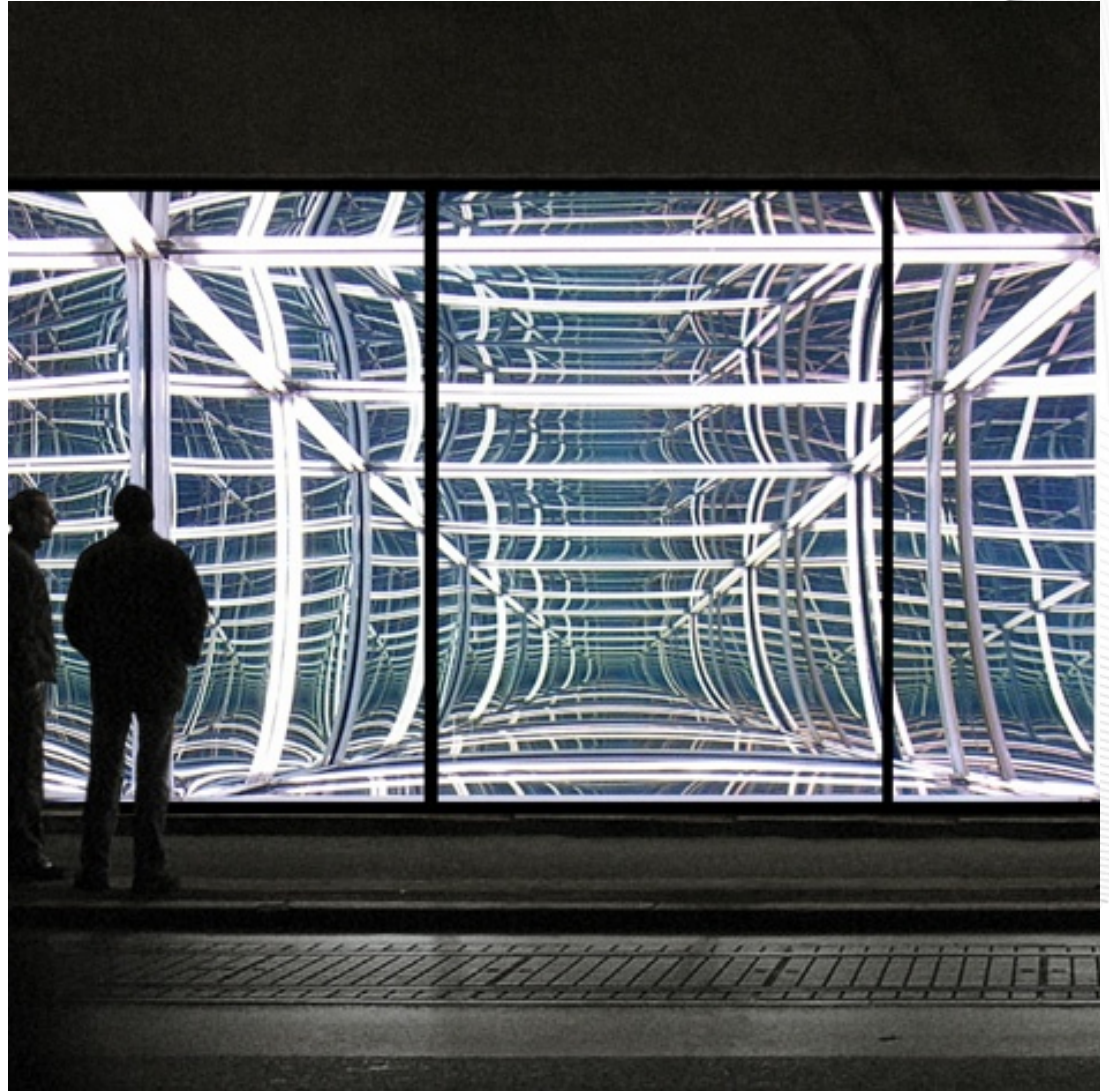
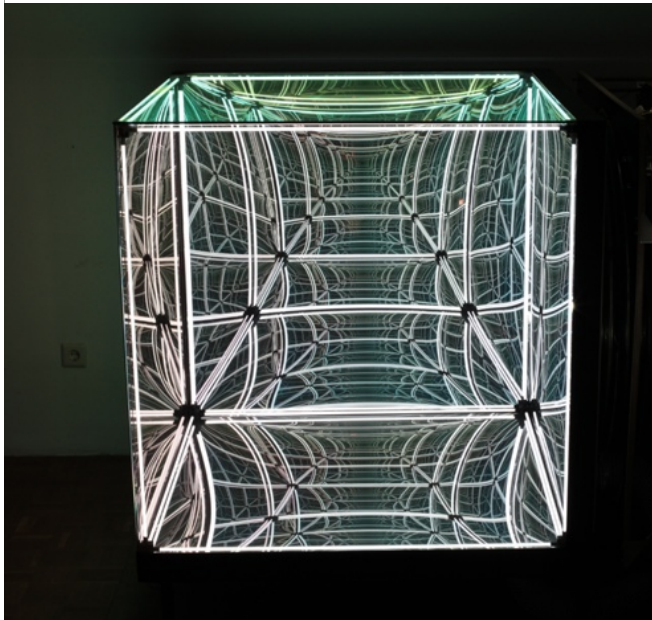
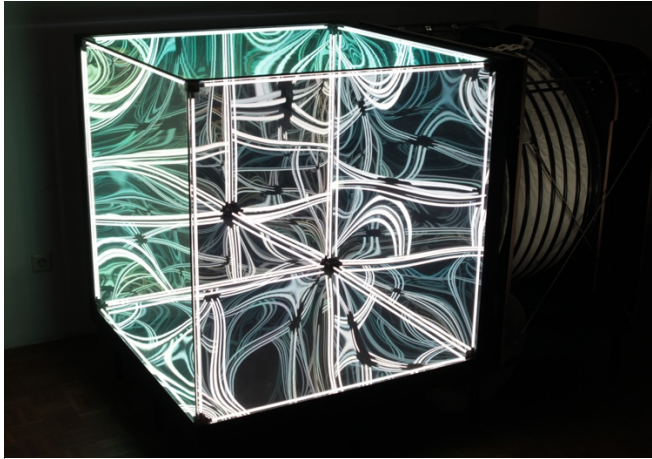
The hypnotic power of seeing the unbound abyss of illuminated night space opening up on all sides towards the vanishing points is so dislocating and overwhelming to the viewer that it instantly induces a state of mute fascination. The sense of the sublime which ensues in the sight of all the four great privations combined - vacuity, darkness, silence and solitude - is universal to the human spirit.

When the adjacent machine is turned on, the (de)compressed air-tank deforms the foil mirrors of the cube producing alternate convex and concave planes. It causes the vast Cartesian light grid to suddenly lose the 3rd axis and flatten, morphing into a range of surface phenomena similar to graphic ornaments. Halting the distortion of the membranes restores the stability, depth and psychological unease of the initial void.

Due to the peculiar nature of spy glass mirrors, a simple act of extinguishing the light in the box easily reverts this inner spectacle back into the impenetrable, opaque, silently reflecting mystery cube.

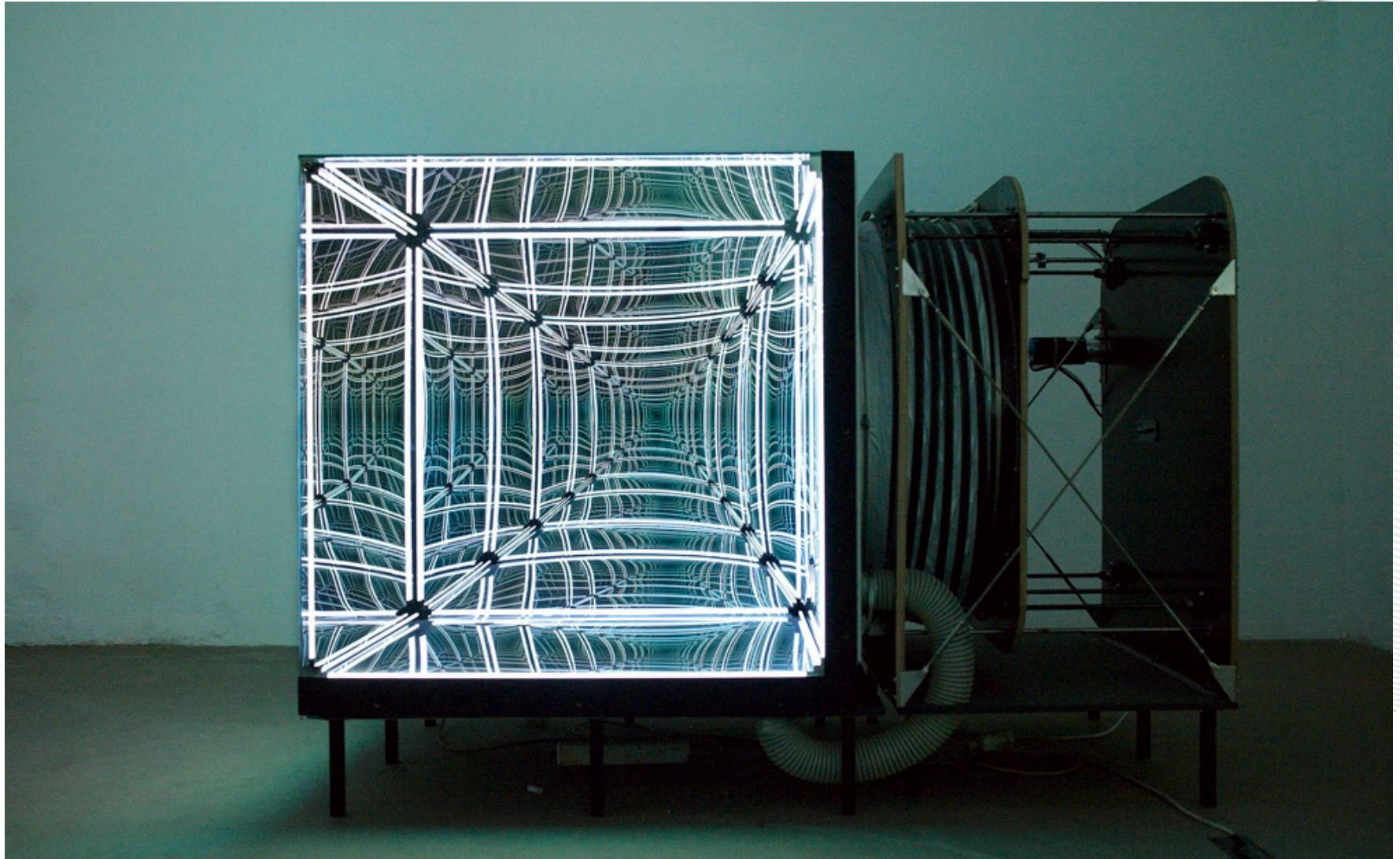
'The fascination of being absorbed into infinity'

MEMBRANE



MEMBRANE

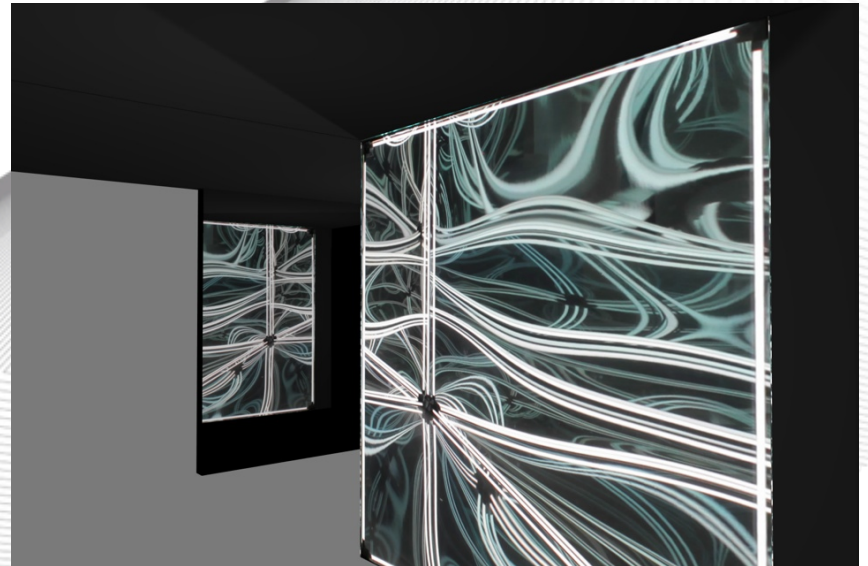
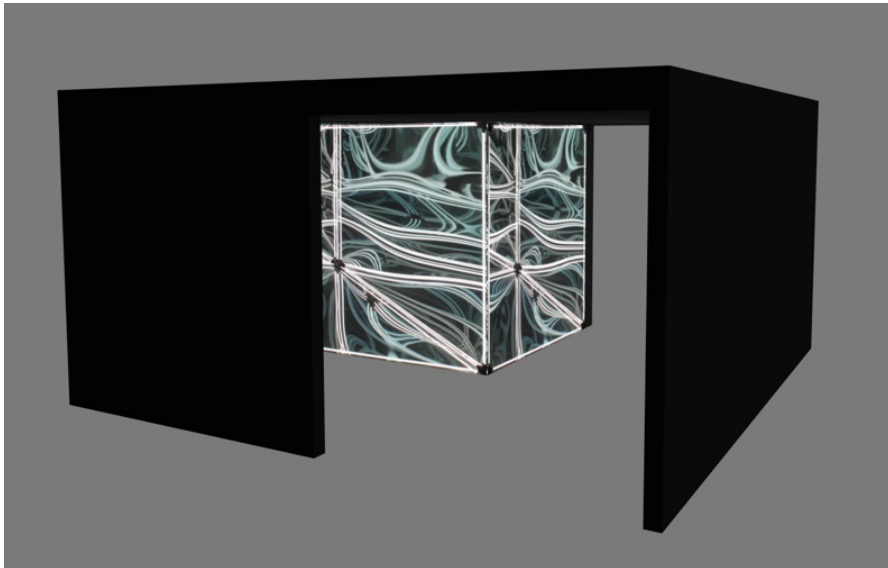
**balestra
berlin**



Implementation

The Membrane cube will be implemented into a flexible 'Black Box' offering an intensive perception of the hypnotic power of the light effects. Entering the box reveals a magic world of calmness - no matter which surrounding the event offers. The audience will be transported in a different sphere by absorbing this out of space experience.

Depending on the type of event and the surrounding the 'Black Box' can be designed as closed structure or an open space which interacts with the environment. The artist will customize the setting for each appearance.



The Artist

Numen/For Use is a Croatian-Austrian design collective working in the fields of scenography, industrial and spatial design and conceptual art.

The group first formed in 1998 as a collaborative effort of industrial designers Sven Jonke, Christoph Katzler and Nikola Radeljković under the banner 'For Use'.

In 1999 they establish 'Numen' as a collective identity covering all projects actualised outside the sphere of industrial design.

The group's early enterprises are characterized by experiments with impersonal design and radical formal reduction, deeply rooted in the tradition of high modernism and mainly applied to various synergetic total-design projects in Croatia.

From 2004 onwards, after setting up a large-scale site-specific project for the production of 'Inferno' in the National Centre for Drama in Madrid, Numen/ For Use became intensely involved with scenography. Further realisations in theatres across Europe ensue.

Since 2008 the collective turns its focus towards configuring objects and concepts without a predefined function, an activity resulting in more hybrid and experimental works such as the Numen-Light series and Tape Installation.

Parallel to these publicly exposed ventures, the group won several international awards for their accomplishments in the field of industrial and set design.

The Artist

Recent exhibitions

2012

Sveta Srca, Solo exhibition, Pula

Danish Design Center, MATERIALS, Copenhagen

Endmoräne, LineaRES, Berlin

2011

London Design Museum, Brit Insurance Award, London

Ars Electronica, What Machines Dream Of, Linz

Fondazione Palazzo Strozzi, Solo exhibition, Florence

Lexus Art Festival, Moscow

Mikser Festival 2011, Belgrade

Prague Quadrennial of Performance Design and Space, Prague

Z 33, Solo exhibition, Hasselt

Fed Square, Melbourne

Rizzordi Art Foundation, Expression Beyond, St. Petersburg

Wattis Institute of Contemporary Art/CCA, WBA3, San Francisco

The Artist

2010

Mikser Festival 2010, Belgrade

DMY 2010, Berlin

Wien Museum, 2000-2010. Design in Vienna

Schirn Kunsthalle, Playing the City II, Frankfurt

2009

Vienna Design Week carte blanche

2008

Vienna Design Week 2008, Pasonswege

Numen - Light exhibition, Milan

2004

Est, est, est. Udine

2003

Solo exhibition Numen 99/03, Zagreb

The Artist

Recent awards (selection)

2012

Red Dot Award /

2011

Prague Quadrennial Gold medal for the Best Scene Design

Prague Quadrennial Gold medal for Best Use of Theatre Technology

2010

DMY Award

Red Dot Award / Corporate Design

2009

Wallpaper Award for the Best Prototype

Nagrada Sterijinog Pozorja Award for Best Set Design

Austrian of the Year 2009 / Nominee / Creative Industries

2008

Prize for product design of Croatian Designers Society

Prize for the best set design in Croatia

Prize for the best set design at the festival in Uzice

Balestra Berlin

Balestra Berlin acts as the access point through which interested parties interlink with the herein presented light artists Numen/For Use. As agents our services include the selection of contemporary light projects, customization of the installations, project management (development, consulting, preparation, contracting & accounting) as well as the onsite production for their clients.

Feel free to contact us for any rental requests or if you need further information or materials.

Balestra Berlin

idea engineering & cultural management

Urbanstr. 64

10967 Berlin

LIGHT+ART Department

phone: +49.(0)30.680 851 30

fax: +49.(0)30.680 851 32

info@balestraberlin.com

www.balestraberlin.com/light+art

The content of this document is intended exclusively for verification by Balestra Berlin's clients.

Furthermore, the contents or parts of the contents of this presentation may not be used in any form without prior written authorization from Balestra Berlin.

© copyright 2013 Balestra Berlin. All rights reserved.